



CELEBRATING  
**LEO AFRICA**  
20 YEARS OF



**Volunteer With Us!**

**Wildlife Monitoring, Conservation and  
Sustainable Living Volunteer Project  
South Africa**



## Be the Change for Nature



Limpopo Eco Operations (LEO Africa) is a Big 5 and beyond wildlife monitoring and conservation volunteer program, established in 2005, 20 years ago. Our mission is to collect, analyse and provide relevant data about the key animal species present in our home reserve to the reserve management team. As well as supporting continuous conservation efforts, the anti-poaching team and veterinary operations when necessary.

LEO Africa focuses on many aspects of sustainable living. Including green energy, recycling and plastics minimisation. Through educating people on environmental matters and their impact on conservation locally and globally, we hope to spread our love of sustainability for future generations.

Our volunteers are the heart of our work, helping us in the field to make a real impact on the preservation of the delicate ecological systems here at Abelana Game Reserve.

You will learn new skills and make amazing memories whilst living a truly authentic conservation experience.



# Where are we based



The experience at LEO Africa is quite unique. The operation is exclusively located in the beautiful 15,000 hectares **Abelana Game Reserve, Phalaborwa**. The reserve benefits from a mixed terrain of dense tree lined riverine forest, large rocky outcrops and open areas.

This beautiful game reserve is owned by the Mashishimale Community and managed by an experienced team of Rangers in conjunction with LEO Africa.

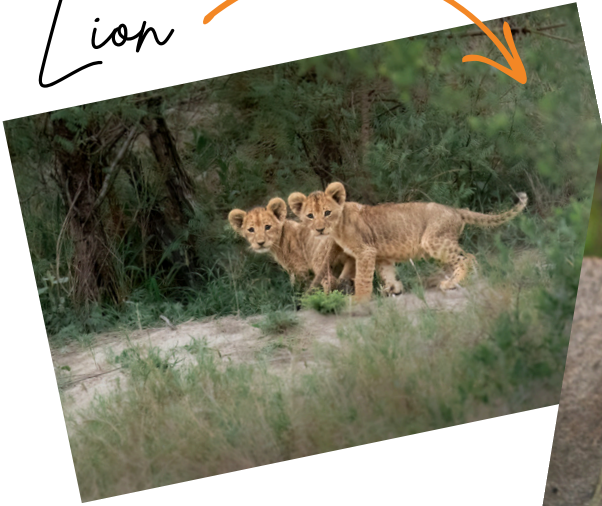
LEO Africa is about **6 hours away from Johannesburg** (OR TAMBO) airport and is in a **low risk malaria area**.





Get a glimpse of our WildLife

Lion



Crocodile



Blue Wildebeest



Cheetah



Leopard



Spotted Hyena





## Our role

LEO Africa is responsible for all of the **wildlife monitoring and conservation activities** on Abelana Game Reserve. Observing and collecting specialist data on various endangered and key species, including but not limited to lions, white rhinos, elephants, leopards, buffalos, cheetahs and hyenas.

We collaborate closely with the reserve management teams and Veterinary services, establishing priorities for the **benefit of the fauna and flora** of the area. Without healthy ecosystems, nature and wildlife would not thrive!

All the animals living in the reserve are wild and completely **free roaming**. We are privileged to be able to monitor them in their natural habitats. **Observing their behaviours**, spatial movements, interactions, reproduction status and feeding preferences.



**We have a great respect for wildlife and we do not support hands-on interactions with animals kept semi wild or in captivity.**

The LEO team are very active in **anti-poaching activities** and the protection of various endangered species on the reserve. **Camera traps** are a vital part of our day to day operations. Placed in various strategic locations around the environment, these are used both to monitor wildlife and create ID kits of key individuals and also for **security purposes**. These allow us to detect any unusual activities. The LEO rangers report on things like suspicious tracks, low flying aircraft and drones, as well as conducting important observations from strategic points to help support the continued work done directly by the anti-poaching teams.

All the work we do is recorded and used for monthly reports for the Reserve Management which aid in the decision-making process concerning the **management of the animals and ecosystems** within the reserve.

**LEO Africa does not receive any funding from the government, the reserve or any other institutions and is solely reliant on the contribution from our volunteers and donors.**

Monitoring drives

Conservation Work

Camera Traps

Bush Walks

Sleep Out

Microlight Flights

Fire Control

Aerial Drones

Wildlife Darting

Anti-poaching

Some ways in which wildlife monitoring, conservation and anti-poaching support occurs.



# Your role as a Volunteer

By volunteering at LEO Africa, you can make a real contribution to conservation by joining an incredibly motivated and passionate team of rangers and guides in their daily jobs on the reserve. While working in the field you will also learn about the flora fauna of the area and its important ecological role. At camp and in our daily lives, we support and encourage you to take a sustainable living approach to life as we work towards a zero waste future.

**The environment is our passion, and we are proud of the work we do to make a change. Helped by you, our volunteers!**

LEO Africa offers a different kind of volunteering experience. With us you have the opportunity to actively contribute towards real conservation while you observe and learn about animals in their natural habitat.

Volunteers play an **essential role** in our project, supporting us on three main aspects of our work: in the Field, at Camp and Financially.



- Data collection
- Photo Capturing to create ID kits for the species monitored
- Conservation work (bush clearing, road restoration, alien plant removal, erosion control, fence/rubbish removal etc)
- Servicing camera traps
- Animal tracking; game capture and animal darting (when requested/necessary accompanying a Veterinary).
- Bush walks (to conduct conservation work, monitoring animals and service camera traps)
- Sleep-outs to support anti-poaching efforts (organised according to the weather, participant numbers and needs)



Carrying out duties on a rotational basis once or twice per week for half day with the other volunteers such as :

- Cooking
- Washing up
- Camera trap processing
- Inserting data
- ID kits
- General house duties and camp maintenance.



LEO Africa is financially sustained only by the volunteers as we provide our vital conservation services free of charge. All the money from the volunteers is used to run the entire project (to buy and maintain vehicles, building restoration and repair, fuel, monitoring and research tools, computers, camera traps, batteries, salaries, food and accommodation etc.). Without the financial support of our volunteers, we could not operate and the Reserve would not have anyone to conduct the vital wildlife monitoring and census data records or conservation.



# Day to Day

## Each day is different !

The wildness of this environment gives us great fulfilment and many surprises.

As each day being different, we can't expect to see all of the Big 5 every day.

There can be very intense days and some quieter ones. However there is always so much to admire and see in the bush.

Everything on camp depends on the many variables which are outside of our control. Such as weather, animal interactions, water sources.

Wild animals can't be controlled. They are fascinating because of this unpredictability.

The only other people who can enter the reserve are the guests of the 5-star lodge located on sight. You are very privileged to have free access to this paradise!



**5:30-12:00**

Morning Drive includes: conservation work, anti-poaching, wildlife monitoring and coffee/tea break (camp duties on rotation)



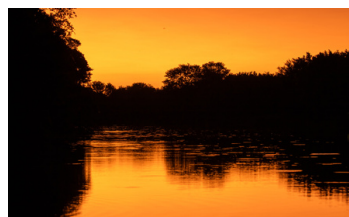
**13:00-15:00**

Free time. Volunteers use this time to enter data; insert their photos onto our computers and relax.



**20:00-21:00**

Dinner. A hearty meal to end the day around the table as a family.



**4:30-5:30**

Wake up and prepare for morning drive with a self service Breakfast



**12:00-13:00**

Lunch, a fulling healthy meal and a chance to catch up on the mornings news and sightings

# Break!

**15:30-20:00**

Afternoon Drive. Includes conservation work, anti-poaching, wildlife monitoring and sundowner (camp duties on rotation)



**22:00**

Good Night!  
Lights out and time for bed.





## Detail of Activities

### Monitoring drives

Every day our LEO guides will take you out on monitoring drives on board one of our 4x4 game viewers and you will help to observe animals, record data and take identification photos for the individuals data sheets. We monitor the behaviour, location movements, feeding and mating. We also make assessments on current health and reproductive status, as well as social interaction.



### Conservation Work

While out in the field, our work also involves taking care of the reserve's ecosystem through conservation activities such as bush clearing, road restoration, alien plant removal, erosion control, rubbish removal and animal darting for collaring and veterinary treatments when needed.



### Camera Traps

Well camouflaged in the bush and placed in strategic points, camera traps are vital for our monitoring and anti-poaching efforts. Each month thousands of photos and videos are processed by our LEO volunteers and staff, which, together with the data collected on drive, are used to produce ID kits.



### Bush Walks

Bush walks are a vital part of our day-to-day monitoring. Accompanied by our experienced rangers, you will walk to get visual data of the key individuals that we monitor when they are not visible from the vehicle. Bush walks are a great way to experience nature in more depth and allow us to log data and check the health of the species monitored, discover new areas and dens or check camera traps.



### Sleep Out

Sleep outs are not only a fun experience, but they also help to assist the anti-poaching teams, acting as a deterrent and extra eyes and ears in strategic parts of the reserve. It is also a great chance to see nocturnal animals and watch the stars. Based on the needs of the team and depending on weather.



## Detail of Activities

### Microlight Flights

Our LEO, volunteers have the unique opportunity to fly over the reserve in our private microlight. Microlight flights are very important as they allow to patrol vast areas from the air, spot wild animals while enjoying stunning views. Flights are charged separately and dependent on pilot availability and wind conditions.



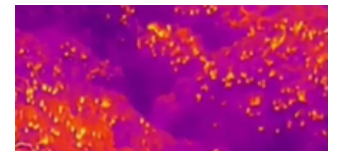
### Fire Control

Volunteers help with controlled and accidental bush fires when needed, mostly during the dry season. Controlled fires are used in reserve management to remove moribund grasses, excess of parasites and encourage the growth of new grass that are more palatable for animals.



### Aerial Drones

Drones may be used to assist our teams with special missions, mostly at night thanks to a thermal imaging drone. Drones are only used when strictly needed to avoid unnecessary stress to the animals.



### Wildlife Darting

When called on, our volunteers may be lucky enough to have the opportunity to assist in a wildlife darting exercise. This might be done for various reasons, including darting for veterinary interventions, fitting tracking collars or for the translocation of individuals to and from the reserve.



### Anti-Poaching

The LEO team take part in daily tasks to help in the fight against poaching on the reserve to save animals lives. Our volunteers are often involved with activities such as snare sweeps in specific areas, monitoring the boundary fences and working through images on the camera traps for suspicious activities.





### Fridays

Fridays start with an early morning monitoring drive. After lunch we head to Phalabowra for group and personal grocery shopping, followed by dinner at a nice local restaurant.

### Sundays

Sundays are the regular day off for the volunteers, although there will still be some light camp duties for completion by the group, such as cleaning the rooms and washing the vehicles.

### Dinner at the lodge (optional/extra)

Dinner at the lodge located in the Reserve can also be organised according to availability.

### Excursions (optional/extra)

Volunteers have the opportunity during their stay to book an excursion to the Kruger National Park and the Blyde River Canyon/Panorama Route accompanied by one of our guides. Costs associated with excursions are split between the volunteers and are subject to the availability of a vehicle and guide. More details will be given once at camp.



#### Kruger National Park

Visiting Kruger National Park for one or more days accompanied by our rangers.

Kruger National Park is one of the most famous National Parks in the world, hosting an incredible variety of species across nearly 2 million hectares. Being so close to this beautiful park, an excursion to this peace of heaven is a must!



#### Panorama route

Visit the Blyde River Canyon, Burke's Luck Potholes, Beautiful Waterfalls, the Echo Caves

While out on excursion to the Panorama Route with one of our guides will you discover some wonderful scenic views, adventurous swimming spots, get an adrenaline rush on the Big Swing and have lunch in the characteristic town of Graskop.

The cost of the excursions is not included in your trip. For more information, please contact us. Excursions are usually organised during the week and based on weather and ranger's availability.

# Our base camp

## Accommodation

Our home base is safely tucked away inside a spacious fenced area deep within the beauty of the reserve, approximately one hundred metres from the river bank. Lots of animals can be seen from the garden. Volunteers stay in low density dorm style rooms (2-3 people per room) with shared bathrooms.

A private room with private bathroom and a semi-private room (without ensuite) is available on request for a small up charge, subject to availability. Please remember to bring your own towels and a sleeping bag as we provide bed sheets, blankets and pillows but no duvet.



*Camp*



*Semi Private Room - shared bathroom*



*Private Room*

## Electricity and water

Electricity is available in all rooms and communal areas with a solar system in place to help reduce our reliance on the power grid. For the consideration of your fellow volunteers who wish to rest and to save energy, lights are out by 22:00. Hot water is available 24/7 allowing for comfortable showers at any time of day (short showers are however necessary to save water). The tap water is safe to drink, however we have also fitted an additional water purifying system for your reassurance. Please bring your own reusable water bottle to help eliminate plastic waste.

## Laundry

A washing machine is available twice per week for a small charge of R50 per load. You can reduce this price by sharing the load with other volunteers where possible. Please note, the washing machine only runs full to avoid wasting water!

## Meals and snacks

A self-service breakfast, filling lunch and hearty dinner are provided during your stay. However there are a few exceptions; lunch on your arrival day/departure (as you will not be on site), and any meals on the Friday night out. You are able to purchase any additional personal snacks and comfort items from the supermarket on the day of your arrival or during a Friday town trip (Please ask us for plastic free tips for your shopping!). A shared fridge is available in the volunteers lounge to store your food and a personal box will be provided in the main kitchen to store any dry goods.

## Communication

We have reliable Wi-Fi access free of charge at base camp. Phone signal in the reserve is very patchy so we do not recommend buying a SIM card (please note Vodacom has the best reception). We suggest taking the opportunity to disconnect, focusing on nature more and less on your phone!

## Money

Currency can be exchanged at a bureau de change prior to arrival, at Johannesburg airport or at camp. Alternatively, you can withdraw money at any ATM using your Visa or MasterCard; most supermarkets and restaurants also accept credit/debit cards.



## When to come to LEO Africa

South Africa is in the southern hemisphere and consequently the seasons are opposite to that of the northern hemisphere. In all seasons there are major temperature changes between day and night, so be sure to bring many layers of clothing, the game viewer is open sided so the wind can be cold in winter!

## Climate in the reserve

This area in South Africa has a subtropical climate with hot, rainy summers and warm, dry winters.

### Winter (May - August)

Dry season, with warm days and cold nights and mornings. The vegetation is sparse and water is limited to rivers and water holes.



### Spring (September - October)

Mild to hot dry weather with sparse vegetation and hot dry winds. Mornings and evenings can be chilly.



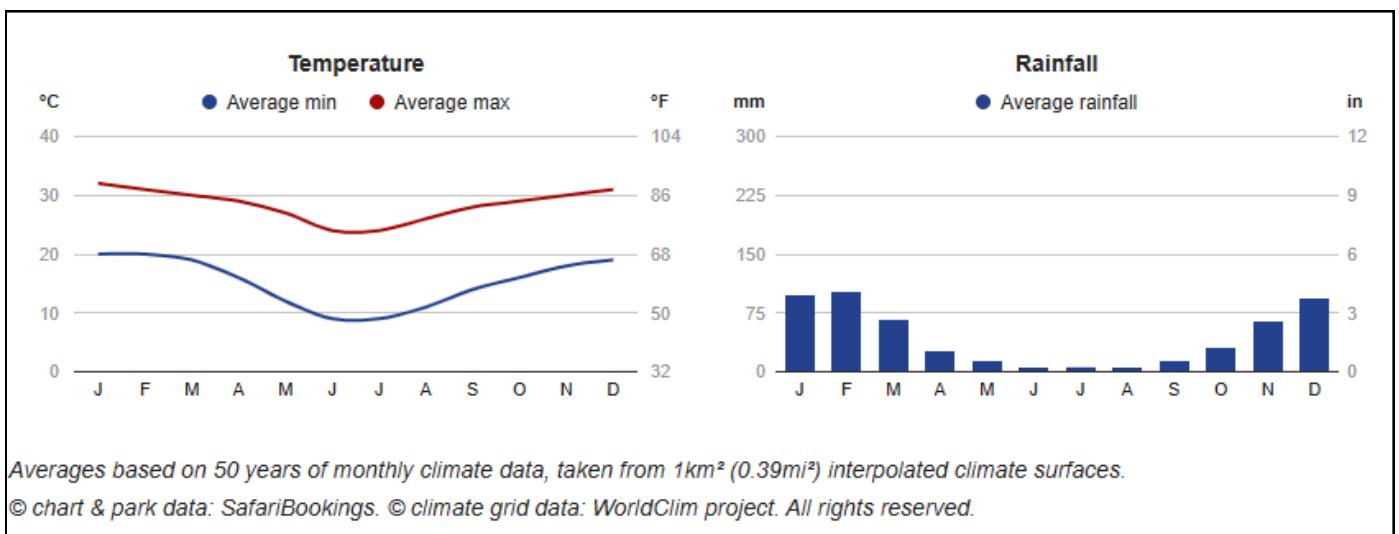
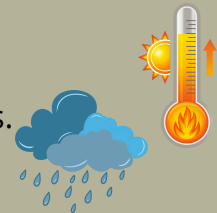
### Autumn (March - April)

Mild climate tending to dry and getting cooler.



### Summer (November - February)

Rainy season, with hot, humid days and heavy downpours on occasions.



# Fees

## Booking and Fees

Booking your trip to LEO Africa couldn't be easier. Simply Email us at [enquiries@leoafrika.org](mailto:enquiries@leoafrika.org) to enquire about availability. Be sure to book early to avoid disappointment.

A 50% deposit is needed along with your completed application forms to confirm your booking. The remaining 50% is due no later than 30 days before your arrival.

Note, LEO Africa provides a free service to the reserve and do not receive any money from it or any other organisation. Your fees go directly towards running the whole project.

## What you contribute to by volunteering

- Vehicles and their maintenance
- Fuel and power
- Maintenance of the facilities
- Research materials
- Staff salaries
- Solar equipment
- staff training and development
- Camera traps and associated tech

## What's included in your fee

- Food, Accommodation and power
- Land transfers (Minibus transfer Johannesburg OR Tambo Airport to LEO Africa)
- Taking part to all LEO activities in the reserve

## What's excluded in your fee

- Special Transfers
- Visa costs (If needed)
- Flights
- Travel insurance
- Tips and gratuities
- Food at night out/take-away
- Excursions
- Microlight Flight

Throughout your time at LEO, our staff will always be on hand to answer any of your questions or concerns. We offer pre-departure support and information so please don't hesitate to contact us with any questions at [enquiries@leoafrika.org](mailto:enquiries@leoafrika.org)



LEO Africa celebrates its **20th birthday** in 2025 and maintain the fees of 2024 to celebrate this special milestone.

Duration	2025 Fee in EUR (same as 2024)
2 Weeks	1470 €
3 Weeks	2010 €
4 Weeks	2550 €
5 Weeks	3080 €
6 Weeks	3590 €
7 Weeks	4100 €
8 Weeks	4590 €
9 Weeks	5080 €
10 Weeks	5550 €
11 Weeks	5990 €
12 Weeks	6450 €

*South Africans fees available on request*



We're thrilled to welcome back returning volunteers! As a thank-you for your continued dedication, we offer a **10% discount**



# IS THIS FOR ME?

*Yes, If...*

## **You are willing to spend up to 12 hours a day in the bush!**

With two monitoring drives most days you will experience an abundance of wildlife whilst exploring the reserve and directly contributing to the preservation of the environment through conservation works.

Enjoy beautiful sunrises and sunsets against the backdrop of the African bush



## **You are Open-Minded and flexible**

You will meet like-minded people from around the world, you will live together in group. We love having enthusiastic and hard-working volunteers who are passionate and want to learn more about wildlife and conservation.

You are flexible to life in the bush, minimal and not always on schedule.

## **You are willing to actively learn about and take part in conservation work**

Our daily effort is vital to the preservation of the Reserve. The work we do is varied, rewarding and is always for the benefit of the wildlife. You will get your hands dirty, work as a team and gain an understanding as to how a natural ecosystem is managed. You will learn a lot as well about the issues that conservation is facing now a days and how a nature reserve is managed to be successful.



## **You can communicate in English**

You have a Medium/Good level of English to understand the guides and the other volunteers (however some guides can assist with Italian, French and Dutch)..

## **You have an average degree of fitness**

Some of the work is manual, and we could spend a lot of time in high temperatures on foot or in the vehicle. You need to be able to get in and out the 4x4 unattended.

## **You do not smoke or agree not to smoke/vape during the project**

Since 2020, LEO Africa has a strict non-smoking/vaping policy on camp for sustainable purposes.

**You are over 18 years +**  
(16+ if accompanied by an adult)

**Our weeks run from Sunday to Saturday.**

There are two options to get to LEO Africa, according to the week of arrival/departure.

## **Option 1 - Minibus Transfer Johannesburg OR Tambo Airport to LEO Africa**

We organise a road transfer with a Minibus from Johannesburg OR Tambo airport to LEO Africa and vice versa every other week (included in the price) with a private company or through us directly - **please ask for the dates should you prefer this option.**

Should the minibus be your arrival option, volunteers might need to stay over on Saturday night at a guesthouse close to the airport (ask for recommendations). The journey with the minibus from the airport to LEO Africa will take approximately 6 hours with a couple of stops along the way for comfort breaks, lunch and shopping before reaching camp.

Inbound Journey	Departs on Sunday AM at 7.45 AM from Johannesburg OR Tambo Bus Terminal
Return Journey	The transfer gets to Johannesburg OR Tambo International Airport at 17.30 on Saturday

## **Option 2 - Transfers from Hoedspruit Airport or Kamogelo tourist center to LEO Africa**

Should you prefer a short transfer option, **every other week**, you can arrive/depart at Hoedspruit Airport where we will be able to pick you up or drop you off (Transfer to/from LEO Africa included in the price) or we can assist you booking a road transfer with a third party company (please ask for details).

Further information will be given at the time of booking and based on your arrival/departure dates. **Please do not book flights without consulting with us first!** This applies also to volunteers who need to organise a private transfers. This allows us to facilitate all transfers and flights in a timely manner.





# Travel Essentials



## Passport and visas

No visa is required for most EU passport holders and North American countries for a stay in South Africa of less than 90 days. Please double check with the South African embassy of your country if you need a visa.

Please remember that your passport has to be **valid for at least 6 months** from the date you land in South Africa and will need to have **3 free pages**.



## Malaria and vaccinations

LEO Africa is located in a **low malaria risk area** and **no vaccinations** are compulsory for South Africa. Please contact your local doctor or travel clinic for advice on vaccinations.

We recommend long trousers, long sleeves, mosquito repellent and to sleep under the mosquito net at night, in summer month.

## Travel insurance

Please remember that in order to come to LEO Africa, you need to have a **valid travel insurance**. You need to email confirmation of your insurance policy to the office with your information forms. We may need this information to activate the emergency response teams in the unlikely event of an accident.

**Please note**, many household policies and cheap backpacker policies do not provide sufficient cover. In the unlikely event that you do have an accident, you must be covered for all contingencies, including emergency air evacuation.



World Nomads is a well-respected travel insurance provider set up by experienced travelers to meet the needs of people who may travel away from the beaten path. They are the first choice for many of the world's leading travel brands such as Lonely Planet and National Geographic Adventure. They do not cover all countries.

Italian residents can alternatively check Viaggi Sicuri

# Packing List

## Clothing

- Shirts/t-shirts
- Warm hoodies/jumpers
- Shorts
- Long trousers
- Warm coat, winter hat, gloves and scarf (especially during winter)
- Sun hat !
- Working/gardening gloves (for conservation work)
- Walking socks/thick socks
- Hiking type shoes !
- Comfortable shoes/flipflops (time off)
- Sunglasses !
- Waterproof Jacket/Raincoat (summer)
- Towel !
- Swimsuit

## Equipment

- Camera for ID photos !
- Sleeping bag !
- Head torch/torch !
- Water Bottle - min. 1.5 litres !
- Battery charger/rechargeable batteries
- Memory card(s)
- Small rucksack
- Roll mat - for sleep outs
- Binoculars
- Mosquito net (can be provided)
- Towel

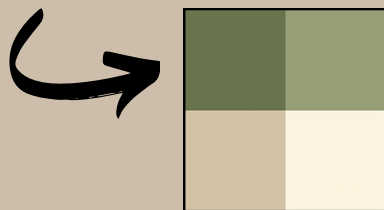


You will be provided with **one LEO t-shirt** that you will be wearing on drives.

You can purchase additional t-shirts as well as caps, fleece beanies and more.




In winter, early mornings and evenings are cold. Please make sure to bring plenty of layers to stay warm.

Neutral shades such as olive, brown, green, khaki and beige are best.



White and bright colors are NOT allowed in the field.

## Other

- Plug Adapter ! 
- (can be purchased once in SA)
- Sun screen (SPF 30+) can be purchased at camp !
- Natural Insect repellent can be purchased at camp !
- After sun lotion
- After bite cream
- Any medication you take regularly
- Toiletries: shampoo, body wash etc. (please note that a Plastic Free starter Pack can be purchased at LEO, please see our sustainability section and brochure for more information) 
- Please note items such as hairdryers, hair straighteners etc. cannot be used as we have solar panels. 
- Working gloves (optional)

! Essential items



# Sustainable Living

At LEO Africa, we are very passionate about preserving the environment and living sustainably.

We believe that conservation should be done 360 degrees! From using solar panels to reducing water consumption and waste, we also try to reduce to zero the use of single-use plastic. Please, when you come to LEO **do not bring any plastic bags or non-reusable plastic water bottles!**

In line with our sustainability policy and anti-plastic campaign, we are trying to introduce our volunteers to a **plastic free** and **sustainable lifestyle**.



To start with, you can save space in your suitcase and **purchase a plastic free toiletry starter** pack directly at LEO Africa (items can be purchased singularly too). You won't have to worry about bringing liquids on the plane, and you will be helping saving the environment.

The pack includes:

- 1 shampoo bar,
- 1 conditioner bar,
- 1 soap bar,
- 1 deodorant in glass,
- 1 body balm,
- 1 face cream,
- toothpaste tablets,
- lip balm,
- sun cream,
- bamboo toothbrush.



We hope all volunteers who join us continue to think about how to live in a more eco-friendly way once they return home and will share ideas with family and friends, encouraging them to do the same! Everyone can play their part in protecting and looking after our planet. Here are some easy tips on how you can use less plastic at home.



Ask us for more info!

#choosetorefuse

#lifeisfantasticwithoutplastic

---

# Our Dream... ...Is your future

---

*-The Greatest Threat to our planet is the belief that someones else will save it- Robert Swann*

So much of this planet is being sold off and brought up for greed and destruction, but what will be left for the animals? What will be left for nature? What will be left for our future? Animals need space and healthy eco-systems to exist and humans need nature to survive...

Here at LEO Africa we have a dream that one day we can own our vast piece of land for the conservation and preservation of animals and their precious ecosystems. We would like to be able to purchase land(s) to restore, rewild or annex to existing ones and successfully manage for the benefit of the planet. With a strong focus on species and habitat conservation, and the hope to work alongside other like-minded landowners to recreate natural wildlife passages, eco zones and safe corridors for all species, including critically endangered and keystone species in Southern Africa, to inhabit, navigate and thrive.

Harnessing our years of experience in tracking, managing and monitoring animals and land throughout Southern Africa, we aim to create a safe, productive, natural, untamed environment that will become a beacon of ethical practice for the many generations of wildlife conservationists to come.

Through our perseverance, commitment and passion we work hard to grow our knowledge and understanding of these environments and the behaviour of the animals that we monitor in their habitats on a daily basis. Our team is extremely motivated and skilled in protecting and understanding wildlife and their ecosystems. The desire to pursue our conservation dream to give back to nature, grows bigger day by day.

Unfortunately, due to the growing market of recreational land and continued habitat destruction for 'luxury housing'. It is becoming more of a challenge to find suitable land and resources at a reasonable price.

As LEO Africa is currently solely funded by our volunteers (for the daily running of our program) and occasionally by kind sponsors so reaching our honourable goal is fairly difficult.

In 2023, we have launched the LEO Africa Foundation to assist us further in reaching our conservation goals. The foundation aims to create an ethical hub for conservation progress while extending our vital role as ethical and committed conservationists. Through the foundation, we hope to start various collaborations with valuable sponsors, companies and philanthropists who share the same vision of a green future for our planet, to benefit wildlife, habitat preservation and ultimately, the wellbeing of the human species, in harmony with nature.

**To Donate directly to the LEO Africa Foundation and to further discuss conservation collaborations, please Contact Us at [enquiries@leoafrika.org](mailto:enquiries@leoafrika.org) or +27 79 8772717**



# Donations

Want to help protect wildlife but can't volunteer?

Consider these donation options:

- Financial support of the project
- In-kind donation
- Donation to anti poaching team

## Financial support of the project

LEO Africa's conservation, monitoring, and sustainable living initiatives depend entirely on the generous support of our volunteers and donors. Your contributions are crucial to our ongoing efforts to protect wildlife.

The donations go straight into:

- Basic running of the projects and living costs
- Monitoring and research equipment
- Maintenance of solar vehicles and electric scooters
- Camera traps, batteries and SD cards maintenance
- Fuel costs necessary to run all our vehicles
- Staff living costs
- Monitoring and office equipment maintenance



For your generous donations, you can use this [link](#)!

Get a closer look at our commitment to wildlife and discover why our work is essential for their survival.

- Success story of collaring a spotted hyena ([link](#))
- Success story of snare removal on a male lion ([link](#))

## In-kind donations

You can contribute directly to the renewal of our equipment with good donations.

- From our amazon wish list directly ([link](#))
- Bringing or shipping the following items to us

The full items list is in our [website](#), the items that are on our top priority list are :

- Any spare 4GB or 8GB SD cards that are no longer in use and adapted to our older model of camera traps
- Night Vision
- New Laptops used for research purposes
- 2 uovision camera traps used for anti-poaching and security

## Donation to Anti Poaching Unit

LEO Africa is seeking donations to support anti-poaching efforts in South Africa.

These donations will be used to:

- **Replace essential gear:** Fund the purchase of worn-out items like sleeping bags, tents, and camouflage clothing.
- **Build and expand campsites:** Create better sleeping accommodations for anti-poachers, enhancing their mobility and effectiveness.
- **Provide additional food:** Supplement the rations of anti-poachers with extra snacks and treats.

You can contribute by:

- **Bringing specific items** from the equipment list or leave behind any unused items.
- Making a **monetary donation** ([link](#))

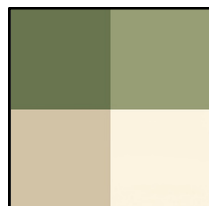


## Needed Items

- Tents
- Sleeping bags
- Rain jacket
- AA or D Batteries (rechargeable)
- SD Memory card (8-16 GB)
- Camera traps (Cuddeback C1)
- Sleeping/roll mats
- Tools (knives, torches etc.)
- Walking/hiking boots
- Binoculars
- Water bottle
- Small backpack (neutral colours)
- First aid kits
- Food (instant noodles, food in cans, etc)
- Clothes (men's size)
- Blankets
- Camping Pillow
- Candles, lighters, matches
- Hats and caps
- Soap
- Mosquito nets
- Sunscreen
- Toothpaste and toothbrush
- Towels



Remember that we use neutral colors for the equipment





## Recommended Readings



You've made the fantastic decision to join us as a volunteer! Amazing!

To help you prepare for your upcoming adventure, we recommend checking out these inspiring books

### Guides

- Roberts Bird Guide - Second Edition by Hugh Chittenden et al
- A Photographic Guide to Tracks and Tracking in Southern Africa by Louis Liebenberg
- A Guide to the Reptiles of Southern Africa by Graham Alexander and Johan Marais
- Game Ranger in Your Backpack by Megan Emmett and Sean Patrick
- Stuart's field guide to mammals of southern Africa by Chris Stuart and Mathilde Stuart

### Animal related

- Beat about the Bush: Mammals by Trevor Carnaby
- Are We Smart Enough to Know How Smart Animals Are? by Frans de Waal
- Why Zebras Don't Get Ulcers by Robert M Sapolsky
- An Elephant in My Kitchen by Francois Malby-Anthony
- The Book of Vanishing Species; Illustrated Lives by Beatrice Forshall

# Recommended Readings

## Conservation Challenges

- The Last Rhinos by Lawrence Anthony
- Rewilding Africa by Grant Fowlds
- Born Free - Joy Adamson
- Poached by Rachel L Nuwer
- Dark Ecology; For a Logic of Future Coexistence by Timothy Morton
- Wilder; How Rewilding is Transforming Conservation and Changing the World by Millie Kerr
- The Sixth Extinction; An Unnatural History by Elizebeth Kolbert
- The Plastic Problem; 60 Small Ways to Reduce Waste and Help Save the Earth by Aubre Andrus
- Wasteland; The Secret World of Waste and the Urgent Search for a Cleaner Future by Oliver Franklin-Wallis

## Flora

- The Hidden Life of Trees by Peter Wohlleben
- Finding the Mother Tree by Suzanne Simara





## TESTIMONIALS

*"I never saw a Team so committed to there cause. The Team at LEO is truly extraordinary. Without a doubt, I WILL BE BACK!"*

**- M.J. Koperdraad-**

*"A wonderful place with wonderful people. An adventure to live, full of animals, emotions and nature."*

**-Simone Sperati-**



*"Fantastic way to see how conservation is working"*

**-Nicola Steel-**

*"LEO Africa is a great program to experience wildlife up close, learn everything you wanted to learn about conservation work, make new friends and experience one of the biggest adventures of your life"*

**-Esther Luijk-**

*"LEO is an experience like no other in the way it brings animals and conservation together"*

**-Ryan Ellis-**



*"LEO gave a great insight in how important and yet challenging wildlife management is"*

**-Olivia Jossi-**

*"LEO provides hands on work in conservation and a realistic, educational approach in managing and monitoring wildlife in a National Park section. Thank you!"*

**-Lesley Oliver-**

*"Safari and beyond: the behind the scenes of a wildlife reserve, active part in conservation and amazing people"*

**- Vittoria Sesana-**



*"My time at LEO has really given me a new perspective in what can be done to protect animals. Truly an experience of a lifetime!"*

**-Eleanor Kim-**



We look forward  
to welcoming you !!



## Contact

Physical Address: LEO Africa, Abelana Game Reserve, Phalaborwa, South Africa

Email: [enquiries@leoafrika.org](mailto:enquiries@leoafrika.org) | Mobile & Whatsapp [+27 79 8772717](tel:+27798772717)

## Follow us on social media!



[www.instagram.com/leo\\_africa](https://www.instagram.com/leo_africa)



[www.facebook.com/LEO.Africa](https://www.facebook.com/LEO.Africa)



[www.tiktok.com/@leo.africa](https://www.tiktok.com/@leo.africa)



[www.leoafrika.org](https://www.leoafrika.org)



[www.youtube.com/@LimpopoEcoOperations](https://www.youtube.com/@LimpopoEcoOperations)

